

A Stefanutti Stocks Publication

# Benchmark

Continuous pursuit of higher levels of performance

**Stefanutti Stocks in Africa**

**Kusile Power Station**

**Hotel Construction**

**Capabilities**

**A Bloomingdales in Dubai**

**Environmental Projects**

**Leadership Development  
Programme**



United in bridging your expectations

# Contents

## Stefanutti Stocks footprint in Africa

Structural rehabilitation	3
Marine projects	3-4
Multi-disciplinary Sakhuphe Airport	5-6
Ubombo Sugar Mill expansion	6
Concessions - operating PPP's	7
Radisson in Maputo	7

## Concessions

8

## Industry Capabilities

### Building & Construction: Hotels & Leisure

Hotel construction resume	9-12
Shopping malls	15-16
A Bloomingdales in Dubai	16
Geotechnical at Sandton City	17
Freedom Park	27

### Power

Majuba Loop-in	18
Multi-disciplinary Kusile Power Station	19-20
Environmental - rehabilitation for Eskom	21

### Mining

Specialised underground 4x4	18
Environmental - rock cladding	22

@ Stefanutti Stocks City	13-14
--------------------------	-------

Safety Focus	23-24
--------------	-------

Development	25
-------------	----

Socio-economic development	25-26
----------------------------	-------



## From the CEO

After years of anticipation the biggest sporting event in the world is upon us, and 2010 will certainly be a year that all South Africans, and not only the soccer fans, will remember for years to come. We at Stefanutti Stocks are proud of the role our various disciplines have played in the construction and upgrade of infrastructure across the country in preparation for South Africa to host this premier event.

These '2010' projects also contributed to the achievement of our financial targets for the financial year end February 2010. Total turnover for the Group since February 2009 increased by 17%; operating profit increased by 21% and our order book, as at the end of February 2010, was R6.2 billion.

With market conditions in most sectors in South Africa still quiet we are focusing on expanding our presence in neighbouring countries and strongly pursuing opportunities in the rest of Africa.

We are now also beginning to reap the rewards of investments made in the businesses we have acquired. The Mechanical, Electrical and Power Business Unit was awarded their first overhead line contract and we are looking forward to good growth in this sector. Further our Mining Services Business Unit has positioned itself well with its open pit contract mining capability.

The Group's strategy has always been to maintain its assets to the highest standard, and in line with this we continue to invest in quality plant and equipment. This has been



Our passion and unwavering commitment to service excellence continually surpasses each benchmark we set, and will continue to drive the success of the Stefanutti Stocks Group.

Stefanutti Stocks Holdings Limited | Tel: +27 11 571 4300 | [www.stefanuttistocks.com](http://www.stefanuttistocks.com)

We'd like to thank everyone who made contributions, both editorial and photographic.

Front cover photographs, from top to bottom, left to right:

1. Majuba Loop-in (page 18).
2. Your Safety First (page 23).
3. Geotechnical (page 17).

Comments & contributions | [benchmark@stefstocks.com](mailto:benchmark@stefstocks.com)

Compiled on behalf of Stefanutti Stocks by Gerbera Brand Management | Cell +27 82 371 1005

# New Appointments

particularly evident over the past months, during which our Roads & Earthworks Business Unit and Geotechnical division have complemented their fleets by investing in the latest technology.

One of the key concerns in our industry is health and safety and our Group's pursuit of the highest standards across all our disciplines is achieving good results. Our Roads & Earthworks division has achieved one million Disabling Injury Free hours and over the past few months some innovative on-site campaigns have been introduced. These will be rolled out to the rest of the Group in the coming months.

Our focus on up-skilling and further developing our people remains a key priority in the Group. This focus on people extends further to the communities within which we operate, and it is heartening to see some of these efforts progressing into sustainable partnerships.

As with all good teams we remain focused and optimistic for the road ahead. Building on our reputation of commitment, teamwork and entrepreneurial flair, we know that we will achieve the goals we set ourselves, now and in the years ahead.

Ke Nako. 2010. May the best team win.

*Willie Meyburgh*  
 Willie Meyburgh

## B-BBEE

Stefanutti Stocks (Pty) Limited is a level 3 B-BBEE contributor, offering our clients 110% BEE procurement recognition.

## Awards

We are proud to have been one of five finalists in the Metropolitan Oliver Empowerment Awards. This prestigious award recognizes forerunners in empowerment and transformation in South Africa.

Stefanutti Stocks Board of Directors

- Schalk Ackerman - Executive Director (pictured on the right).

S&B Civils Roads (Pty) Limited - Swaziland

- Greg Mengel - Alternate Director
- Dave Lidbetter - Director
- Clem Shand - Director

Stefanutti Stocks Geotechnical

- Marius van der Merwe - Alternate Director
- Tiaan Erasmus - Director

S&B Construções Mozambique Limited

- Paul dos Santos - Managing Director



## Focus on Africa

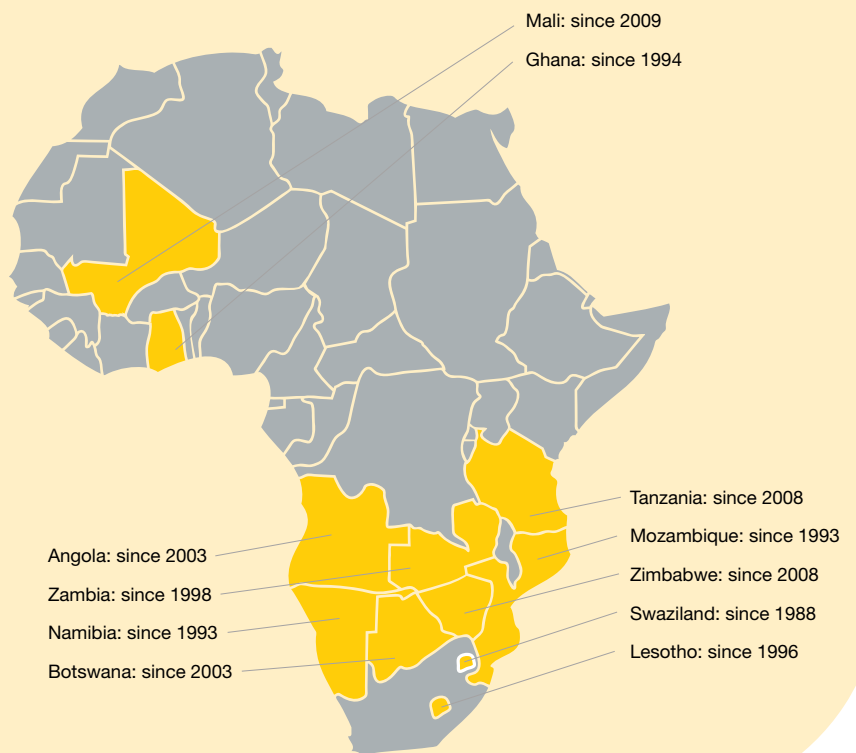
Stefanutti Stocks has been active in sub-Saharan Africa for almost three decades, delivering projects encompassing the full spectrum of the Group's capabilities.

We are leveraging our current foothold in Africa, focusing on increasing our presence in the countries we currently operate in, whilst actively seeking

opportunities in other countries further up the continent.

We have successfully delivered a variety of projects, some in remote locations with challenging infrastructures and logistics.

Pages 3-8 detail some of these projects ranging from structural rehabilitation through to mega marine projects; from constructing an airport comprising of access roads, runways, terminal and auxiliary buildings, through to building a luxury hotel.





# Structural Rehabilitation Work for Gold Mines in Africa

Source: Leon van der Merwe



## Geita Mine – Northern Tanzania

Client Anglo Gold Ashanti approached the Stefanutti Stocks structural rehabilitation section to assist with remedial works to the supporting base of the primary crusher at Geita Mine in Northern Tanzania.

The primary crusher is a gyratory crusher installed in a typical primary tip/crusher arrangement. The supporting base of the gyratory crusher was showing signs of distress due to extreme stresses transferred from the crusher onto the base, and the lack of cover to the four 75mm holding down bolts.

We were approached as a contractor with skills and experience in this type of work, to repair the base as a number of cracks had developed. These were repaired by

means of injecting a low viscosity epoxy resin into cracks. In addition to the crack repair a high strength reinforced grout skin was added to the outer face of the base.

Due to the remote location of the mine, the project required precise logistical and resource planning. The mine was shut down for five days to allow a five day, around the clock rehabilitation operation. Material and equipment was shipped in three months prior to the scheduled shutdown.

“Our team travelled for two days and took three flights to get to their final destination,” says Pieter du Plooy, site agent. “The project was a great success and the team is looking forward to their next African adventure.”

## Syama Gold Mine - Mali

Client Somisa SA Syama Gold Mine has a similar mining operation to that at Geita Mine, and was faced with the same weakness in the concrete base of the primary crusher. Large cracks had developed and the engineers required an experienced contractor to assist with the repairs of these cracks to reinstate the integrity of the concrete base.

Additional structural problems on the base support included the spalling of the concrete around the outer face of the base, exposing the reinforcing. It was established that the direct stress transferred from the crusher steel base plate onto the top edge of the concrete base had caused the outer edge to fail and spall. The defective concrete was removed and the outer face repaired and re-profiled.

## Diving under Moma Sands

Source: Leon van der Merwe

The Moma Sands Project is a recently completed multi-million US\$ project on the coast of Mozambique established to process mineral sands by means of a proven dredging, concentrating and separation method. The primary mineral extracted is Titanium Dioxide. The material is transported from the facility on land along a pier conveyor system (extending 450m into the ocean), onto a barge that shuttles between the jetty and sea-going bulk carriers moored about seven nautical miles offshore.

The Stefanutti Stocks Civils structural rehabilitation section was approached by Bateman Engineering to assist with the underwater repair to the Berthing Dolphin Pile at the end of the pier, which had been damaged by the impact of the barge during unusually stormy conditions.

“The challenge was to place self-compacting grout around the 1m-diameter steel dolphin pile at a depth of four metres below sea level, working from a platform eight metres above sea level” says Leon van der Merwe, contracts manager.

Divers were used to install a four metre long steel form around the pile creating a 100mm annulus for grouting. The grout used was a specially formulated thixotropic grout incorporating additives to prevent cement washout and enhance cohesiveness specifically for underwater placement.

This grout was pumped by means of a double diaphragm pump into steel pipes, which extended to the bottom of the steel forms. The pipes were slowly extracted as the pumping operation progressed. A continuous pumping operation had to be maintained until the entire annulus was filled to avoid any air pockets developing in the grout and ensuring full displacement of all water within the steel form.

“The project was completed in five days,” says Leon, “and we look forward to the next project Bateman Engineering will challenge us with!”

The flip page of the Mozambique Tourist Brochure.





# Marine works at Malongo Dock scheduled for completion in 2010

Source: Arnold van Taak

The Malongo Dock Expansion Project, situated at Malongo Base in the Cabinda Province of Angola is scheduled for completion later this year. This marine works project entails the construction of an extension to the existing jetty and

will provide additional moorings to accommodate the increased shipping to Cabinda Gulf Oil Company's (CABGOC) offshore oil production facilities.

This design and construct project consists of a reinforced concrete deck 280m long x 14m wide x 400mm thick. The top of the concrete level is approximately 5.3 meters above Chart Datum (lowest low tide). The deck span in the longitudinal direction between supporting beams is spaced at 6.21 meters. The supporting beams span in the short direction (between three rows of 914mm diameter structural piles), each measure 28m long. A total of 138 structural piles were driven plus an additional 36 fender piles.

A double skin sheet pile wave wall has been constructed along the length of the dock on the sea side, protecting the moorings from the incoming swell. The wave wall is stabilised with mass concrete, and protected from corrosion

with cathodic protection. The sandy seabed along the wave wall is protected from scouring by the installation of sand filled geo-textile bags.

Key to the success of the project is the good teamwork and communication between our client, our South African staff and our local employees. Where necessary translators effected communication, however both language groups adopted words from each other's language, with some Stefanutti Stocks Marine foremen even mastering a little Portuguese since their arrival in Angola.

Stringent oil industry safety practices had to be incorporated into the work, complying with our client's expectations – our general monthly safety audit consistently returns scores of over 95% compliance. Currently we are making good progress on all work fronts and look forward to handing over the completed works to a satisfied client, on time, later this year.



# Berth 208 - a multidisciplinary marine project

Source: Leigh Dressing

The construction of the new Liquid Chemical Berth 208 for Transnet Capital Projects (TCP) is proving to be an unforgettable endeavor for all involved. As a multi-disciplinary operation and the fact that most of the tasks were marine-based, the team had huge learning curves to overcome.

The most crucial part of the whole construction process was the beam placement, during which 72 beams weighing between 65t – 75t, were positioned to straddle adjacent pile caps. These beams were loaded with the aid of a 300t Kabelco crane onto a truck & transported from the precast yard to the quayside. Here a 250t Lima crane loaded them onto a specially modified lifting pontoon, the Nyathi, which was designed

for the operation. Once rigged, the barge with beam was guided into position by a tug together with an array of guide ropes which facilitated the accurate positioning of the beam itself onto the pile caps. This activity required careful planning in order to optimise safe work conditions. Beams could not be placed if the wind speed exceeded 40km/hr, if wave heights exceeded 0.5m and/or if tidal heights weren't within a specific window. Another great danger was the wakes caused by passing Port tugs – which could have easily resulted in the load being snatched causing catastrophic damage to marine

equipment. This was eliminated by constant communication between ourselves, and Port Control and no serious incidents were recorded.

The Transnet team, spear-headed by Johan Momborg played an integral part in day-to-day planning. "We created a formidable team on this project," says Leigh. "Our rapport with client TCP was also instrumental in the project progressing successfully."

The estimated completion date is July 2010.



# Mother Nature 'lands' at Sikhuphe International Airport

Source: Shaun White



There are various packages on this project which commenced in June 2009.

The contract packages awarded to Stefanutti Stocks include the construction of:

- the terminal and cargo building;
- the control tower and services building including fire station and training ground; and
- a 9km services road.

The asphaltting team from Stefanutti Stocks Roads & Earthworks business unit is also currently on site asphaltting the new runway.

The package 4 contract, consisting of the control tower and services building including fire station and training ground, is in the final stages of completion, with the exception of the surrounding infrastructure and external works.

The package 2 contract, consisting of the terminal and cargo building experienced major teething problems eventually resulting in a third change in the design team. A refocused design team and

expert advice from Johan Brink, managing director of Stefanutti Stocks Major Projects division\*, finally meant the project was gaining momentum. Then, in early March a devastating freak storm destroyed the entire 5 500m<sup>2</sup> of the terminal building roof<sup>#</sup> and wreaked general havoc to the entire site and surrounding area. This has had a catastrophic effect on the construction programme and the current anticipated completion date is early 2011.

“A special mention must go the site construction team who despite the incomprehensible difficulties encountered have kept a positive and pro-active approach,” says Shaun White, contracts manager. “Despite our struggles, the upside is the possibility of an extension to the package 4 contract to construct the fuel farm and the new Kings Terminal.”

*\* The Major Projects division has focused largely on OR Tambo and Cape Town International airport projects for the last decade.*

*# Page 25 - The roof sheets were donated to the community.*



Sikhuphe Fire Station.



Sikhuphe Terminal Building.

## Sikhuphe Alternate Access Road

Source: Nick Shaw

This contract was awarded in July 2009 and entails the construction of a 9km single carriage-way road. The new road starts from the existing MR3 near Mpaka to the new Sikhuphe International Airport, with the bulk located in 'greenfield' areas.

The relocation of existing dwellings and fences delayed construction for a short while however the delay was short lived and earthworks commenced towards the end of July 2009. “Initially the contract looked relatively straightforward,” says Nick Shaw, contracts manager for the Stefanutti Stocks operation in Swaziland. “We were taken very much by surprise when the usually dry Malindza lowveld area experienced record rainfalls.

1 062mm have fallen since the beginning of the contract which resulted in 43 lost days due to the wet conditions!”

The stabilized sub base layer is currently being completed after which the crusher run will commence.

Along with the abnormal rainfall, the earthworks volumes increased from 56 000m<sup>3</sup> to almost 300 000m<sup>3</sup>.

The contract is due for completion in early June 2010.



The 9km access road is being constructed in a greenfield area.



One of the culverts on the Sikhuphe Access Road.

## Airport Runway completed to international aviation standards

Source: Robert Turner

The 3.6km long, 45m wide Sikhupe International Airport runway will be completed towards the middle of May 2010. The project is being undertaken in joint venture with a local Swaziland company Kukhanya (Pty) Ltd. Johan Hartingh from PH Bagale is our specialist engineer for the project on the asphalt mix designs.

The Stefanutti Stocks surfacing team started on site in November 2009, with the asphaltting team arriving in early January. This was the maiden project for the new fully mobile, 120 ton per hour continuous flow asphalt plant, and by the end of February 25 000 ton of asphalt had already been laid. The quantities on the project include 25 000 ton of continuous grade medium, 25 000 ton of AE2 asphalt mix and 16 000 ton of BRASO.

The final layer on the runway is a BRASO (bitumen rubber asphalt semi-open) overlay, the same asphalt mix prescribe by SANRAL on the Gauteng Freeway Improvement Project (N1, N3 and N12).

"The BRASO layer will be paved in tandem as required by major international airports and our project engineers, ARCUS GIBB" says Robert Turner from Stefanutti Stocks. "There are not very many companies who use this mix, and we are pleased to have it in our armoury."



Runway paving underway.



The first drop of BRASO.

## The 50m high Sikhuphe ATC Tower slipformed by Stefanutti Stocks Civils



## Ubombo Sugar Mill Expansion Project

Source: Ken Gibb

The Ubombo Sugar Mill is situated 450km north of Durban, at Big Bend in Swaziland. The original mill was completed and commissioned a few decades ago. "Due to an increase in power demand and limited power supply, coupled with an increase in sugar demand, our client, Ubombo Sugar Limited, is undertaking expansions on their various mills throughout Southern Africa," says Ken Gibb, contracts director for Stefanutti Stocks Civils KZN,

the lead contractor in JV with S&B Building Swaziland. These expansions include the increase in internal power generation and an increase in sugar production.

Our contract includes earthworks, road works and industrial civil works. The civil works include various sub-stations, transformer bays, a control room, molasses tank bases, various sumps and equipment bases, diffuser, boiler and power house. The concrete volume required is 11 000m<sup>3</sup>. "Our biggest challenge on this site is logistics," says Ken, "but our vast experience working in remote locations, and the support from our Durban and Matsapa offices means things are running according to plan."

The civil contract duration is 14 months and is due to be complete in February 2011.





# Public Private Partnerships in Botswana



SADC Headquarters

## Headquarters for SADC

The impressive new SADC headquarters in Gaborone brings all the units and directorates of SADC under one roof.

The Bongwe Consortium, headed up by Stefanutti Stocks signed a Public Private Partnership (PPP) agreement with the Botswana government to develop the

new Southern African Development Community (SADC) headquarters in Gaborone.

Stefanutti Stocks Botswana designed and constructed the headquarters, and are also responsible for ongoing maintenance of the facility in partnership with Outsourcing Botswana and ECH Solutions.

The concession contract is over a period of 15 years. This project has been in the operational phase since October 2009 and is running smoothly.



## Ombudsman and Land Tribunal offices

The Ombudsman and Land Tribunal offices in Gaborone was the first Public-Private Partnership (PPP) of its kind in Botswana. This PPP marked a significant departure from the way in which infrastructure development in the

country had generally been financed - either by government using funds from the fiscus or through the issuing of bonds. Stefanutti Stocks led the project consortium made up of Stefanutti Stocks Building Botswana (who undertook the design and construction of the building); Bifm, Botswana's largest asset management company who provided the bulk of the financing and Outsourcing Botswana; and a local facilities management company, responsible for the management and maintenance of the building through the life of the 10-year concession to 2017.



## Raddison in Maputo

Source: Luis Gaspar

The Stefanutti Stocks Building division in Mozambique is currently constructing a five star Radisson Hotel on Beach Road in Maputo. This is the first Radisson Hotel in Mozambique and the 12-storey beach-front hotel will include conference facilities, restaurants, offices, bars, a gym and public areas. A state-of-the-art kitchen, cold rooms and a sewer system that cleans and purifies water add to the intricate details that will make this hotel unique in Mozambique.

It's glazed façade is yet another first for Mozambique. External works include pools and the paved parking area including lighting.

"The hotel location means that the water table is extremely high,' says Luis Gaspar, contracts director. "To allow for drainage the paving consists of grass blocks."

The construction site is abuzz with 36 companies from South

Africa on site, and a total work force of 205.

The 56m high structure was completed in 9 months. This 16-month contract will be completed in October 2010 in time for the busy Christmas season.



# A new way of doing business in our industry... converting viable prospects into projects

To maintain a competitive edge in our industry it is important to constantly explore and investigate new ways of doing business. The Concessions business unit provides, in partnership with other business units and the Group, a competitive advantage through the creation of new markets where existing capabilities are leveraged within different business models.

By integrating with the individual business units in the Group, the Concessions business unit adds value by complementing the existing skills base with specialist skills, market intelligence, and the creation of entrepreneurial opportunities through alternative business planning and project structuring.

In addition to our multi-disciplinary construction capabilities, the Stefanutti Stocks' Group has a wealth of commercial acumen that we can leverage in our project procurement. "We are capable of business and investment opportunities that are more complex than the projects we have procured in the past," says Rob King, managing director of the Concessions business unit. "This opens up a whole new avenue of business and investment opportunities for us to explore, and whilst we are constantly gathering market intelligence and searching for viable prospects, we welcome any project proposals from our colleagues who are active within the Group's industries of operation."

Potential opportunities can range from a toll-gate or power supply in Africa through to open cast mining, water and sanitation, treatment of solid waste for municipalities, schools, universities...the possibilities are limitless.

The Mining Services business unit has successfully tapped into the Concessions business unit's specialist skills whilst exploring potential mining projects in South Africa. "The interaction between the Concessions business unit and ourselves was very beneficial in further positioning our business unit in this sector," says Mike Smith, managing director of Mining Services. "We look forward to further collaboration between Concessions, the client and ourselves."

Each prospect goes through an assessment process where the proposed project is processed and reviewed to establish whether it is feasible and sustainable, both for the Group and for the client. If it is a commercially viable venture a business model will be proposed following collaboration with the business unit and the potential client. The relevant Stefanutti Stocks business unit must also show clear interest in participating in the project, or it is not pursued further. Clear expectations of investment, return and responsibilities for all parties involved are determined, and once a workable deal is structured, the project will go to tender stage.

The Roads & Earthworks business unit has prequalified for projects in Zambia, where they have tendered as part of a consortia also including local companies. "We are one of the few companies in the industry with a business unit dedicated to driving concessions," says Russell Crawford, managing director of the Roads & Earthworks business unit. "This not only

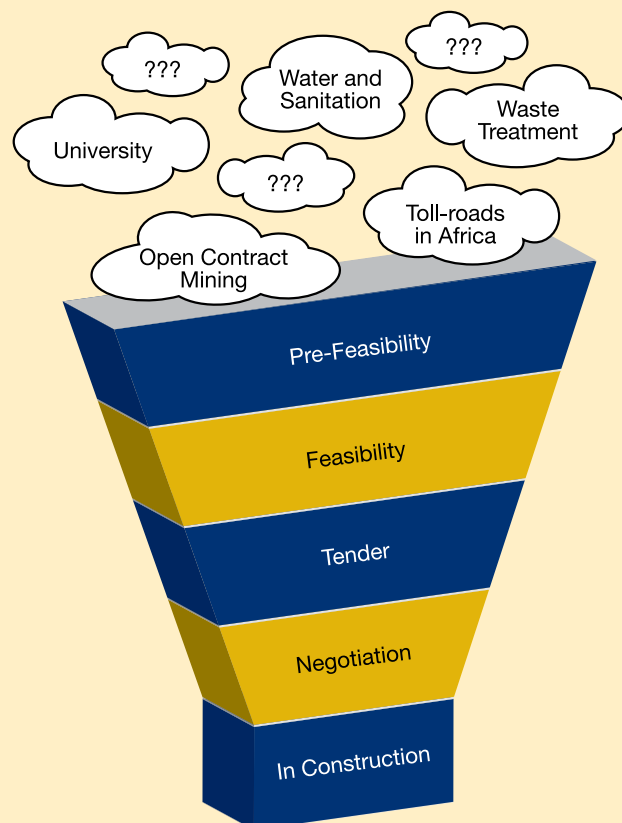
makes us more competitive at tender stage, but also gives us an in-house high caliber, specialist skill base to tap into – one that shares a common goal and is reporting to the same bottom line."

"According to the Development Finance Institution there is a lot of money available for investment in Africa," says Rob. "However, there seem to be very few quality projects to invest in. It's important that as a Group with our diverse capabilities, we keep our eyes peeled for all projects with potential, in Africa and elsewhere. If we can produce a business model that is commercially viable, we are producing a business opportunity for the Group. We don't however need to limit ourselves only to Africa."

*Stefanutti Stocks has prequalified on:*

- *The Department of Rural Development and Land Reform's Head Office Accommodation PPP in South Africa, in conjunction with Stefanutti Stocks Building.*
- *Kitwe-Chingola Toll Road in Northern Zambia, in conjunction with Stefanutti Stocks Roads & Earthworks.*

The Concessions business unit is based in Kyalami Business Park in Johannesburg and can be contacted at +27 11 466 8010.





Interior of the Michelangelo Hotel.



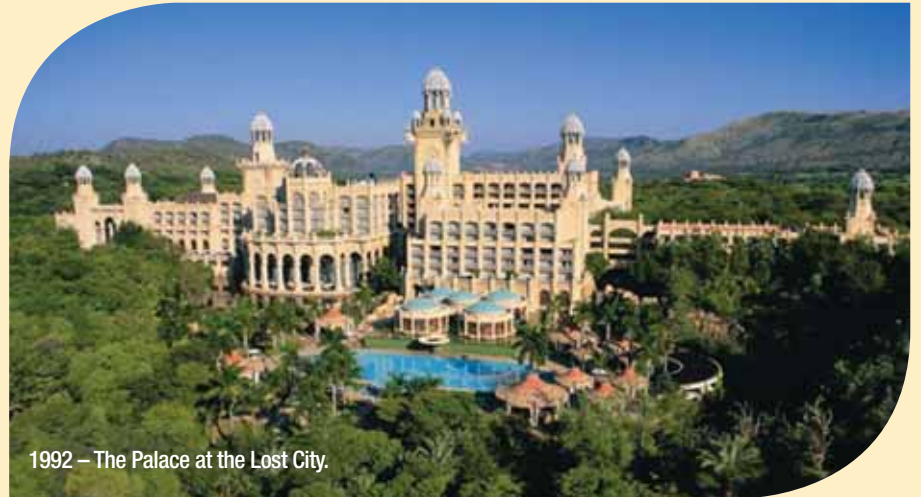
## A six star hotel construction resume

Source: Luc Jacobs & Pieter Postema



With the exception of a lull in the demand for hotel construction in the late 1990s early 2000s, the increase in both leisure and business tourism, the legalisation of gambling in South Africa, and major international events including the 2010 FIFA World Cup have provided a constant demand for the development and construction of hotels in South Africa.

Stefanutti Stocks Building's hotel construction resume dates back to the 1970s when the ex-Stocks construction team was initially exposed to fast track, high quality construction of hotels and casino's via Sol Kerzner's Sun International projects. Over a dozen hotels were built for the hotel tycoon over a period of 15 years, including the world famous Sun City (1978) and The Lost City (1992), both completed in record time. During the 1980s and 1990s the company became intimately involved in the development, project management and construction of their own hotels and time-share resorts for Stocks Leisure,



1992 – The Palace at the Lost City.

giving them exceptional insight into hotel and resort construction budgeting, management and project delivery. The time-share developments are still successful today, and include La Cote da Zure (KZN), Kwa Maritane, Bakubung and Tshukudu in the Pilansberg. The impressive Michelangelo Hotel in Sandton was built in 1996 and

is today rated in the leading hotels of the world category.

In the mid nineties the Windhoek Country Club Hotel & Casino and the Swakopmund Station Hotel and Entertainment Centre were developed for Stocks Leisure.

The Swakopmund Station Hotel, an old station building and a national monument, was a unique project where work was done solely on the interior of the station building and new buildings were added to accommodate 90 rooms, conference rooms, restaurants and the casino. In contrast, the 120-room Windhoek Country Club was built from the ground up, and completed in 12 months, in time for the first Miss Universe ever held on African soil.

A further two hotels were built in Namibia for clients.



Swakopmund Hotel.



Windhoek Country Club interior.

The industry in general went through a lull and in September 2005 construction started on the Sibaya Hotel Lodge in Kwazulu Natal for the Sun International Group, marking the revival of this sector.

In the last few years a list of impressive hotel construction projects have been awarded to Stefanutti Stocks. These include a combination of refurbishments/additions to existing hotels such as the Golden Horse Casino & Hotel property (Pietermaritzburg) and the Stay Easy Hotel at Century City in Cape Town. Inner city refurbishments include the impressive 15 On Orange and Cape Royale in Cape Town. New builds range from the impressive 5-star One and Only on the Cape Town Foreshore and the new Radisson hotel in Maputo, through to flagship new City Lodge on the OR Tambo multi-storey car park, to the mid-range Holiday Inn Express brand (one in Pretoria, one in Cape Town), a new Stay Easy in Rustenburg and a brand new Garden Court hotel in Durban.

Exposure to nearly five decades of hotel construction and proactive involvement in the design processes has resulted in Stefanutti Stocks becoming a highly respected, value adding partner to most hotel developers in South Africa and neighbouring countries.



2005 - The Maropeng Hotel – a boutique hotel in the Cradle of Humankind.



2008 – Stay Easy at Century City in Cape Town.



2009 - The five star One and Only Hotel on Cape Town Foreshore, built for Sol Kerzner International.

## Garden Court, Southern Sun

Source: Gary Coetzee

The Garden Court hotel is the prototype of the new look for the Garden Court brand for the Southern Sun Group. This development consists of 204 rooms, conference facilities, meeting rooms, bars and entertainment venues.

Stefanutti Stocks Building KZN started on this project in mid March 2009, and the target for completion is mid May 2010. The structure was completed in under seven months, covering a total area of 26 500m<sup>2</sup>, including the basement areas.

The building itself consists of four levels of basement parking, five hotel levels as well as the plant room which is situated on the sixth floor.

Originally bathroom installation was going to be via the prefabricated pod system. The pods could not be supplied in time to meet the tight program deadlines, hence the conventional bathroom installation route was chosen. This resulted in a

massive resource requirement in terms of domestic as well as selected sub contractors.

“Part of the new look for the hotel brand includes the external façade - an aluminum lattice screen clad in sand stone,” says Gary Coetzee, contracts manager. This time consuming and complex finish has been challenging but the finished result is one to be proud of.”





The City Lodge on top of the seven-storey carpark, also built by Stefanutti Stocks Building.

## The jewel in the City Lodge crown

Source: Graham Spence



The recently completed City Lodge Hotel at the OR Tambo airport is built on top of the seven-storey car park completed by Stefanutti Stocks Building in 2009.

Stefanutti Stocks commenced this project in January 2009 and completed the structure at the end of May 2009. Wet trades were completed by the end of August and the hotel opened partially on 9th March 2010. The last bedrooms were handed over on 31st March for interior fit out, and in time for the complete hotel to trade fully from 1st May 2010.

“It was a daunting challenge to complete this 303 bedroom hotel, with its first class finishes in 14 short months” says Graham Spence, contracts director, shortly before

his retirement. “The logistics at an operational airport, no site establishment, three tower cranes lifting all materials straight from trucks onto the structure, three roads converging and working side by side with the Gautrain, meant we were all kept on our toes!”

The 303 room, three star hotel comprises of a three-storey reinforced concrete framed structure, with brick plastered and versus finished facades. The roof consists of a concrete roof slab with a metal roof, and also houses the caretakers office and workshop, and all air-conditioning, boiler and plumbing services.

“An interesting element of the construction process was the use of

prefabricated (pods) bathrooms as specified by our client,” said senior site agent, Brian Jarvis. “These were built in a factory, delivered to site in their complete state, and hoisted, positioned and lowered into each of the 303 bathrooms.”

This City Lodge is the new flagship for the hotel brand and introduces a new style and finish for City Lodge hotels. More attention to detail on the interiors and finishing meant more focused shop-fitting and no compromise on quality. “During the contract we established a wonderful working relationship with our client,” says contracts manager Ruloph Theunissen, “who are thrilled with their new hotel.”



Graham Spence joined as a director in 1999 and was involved in a wide range of contracts, including extensive projects at the airport in Johannesburg. There were many secrets to his success, most notably perhaps his ability to balance attention to detail with deadlines, as well as talent of building great relationships and a remarkable rapport with all his clients.

## More glamour for the Golden Horse Hotel

Source: Justin Roberts

The 96-room Golden Horse Casino Hotel in Pietermaritzburg is being refurbished as part of a total revamp of the Golden Horse Casino, Hotel & Racecourse. Stefanutti Stocks Building has been on site since 2008 upgrading the various elements of this property. The hotel refurbishment is a four month contract, due for completion at the end of May 2010.

The hotel room layouts are undergoing minor changes whilst the bathrooms are being completely revamped. To allow continued operation of the hotel during this contract, it is being approached in three phases, starting with the 1st floor 35 rooms, then the 2nd Floor 40 rooms and finally the ground floor 21 rooms.

The public areas inside the hotel are being repainted and new carpets laid,

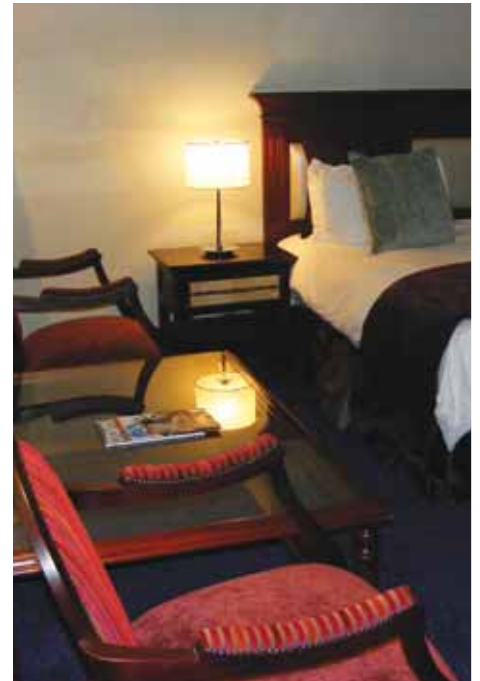


The team with the famous horse statue in the background.

whilst the exterior of the building will be finished with marmoran bands. A new main gate-house building, new pedestrian and staff entrances, and new main façade finishes also form part of the scope of works.

The fate of the famous horse statue, after which the property is named, is yet to be decided. Confirmation from Gold Reef Resorts is pending on whether they will revamp or replace the horse.

“We have a very focused team on site”, says Justin Roberts, Stefanutti Stocks site agent on this project. “We are also in the fortunate position to have a fantastic working relationship with our sub-contractors, who have gone the extra mile to ensure this project runs smoothly and to programme”.



## Wrapping up a Major Project for ACSA

Source: Pieter Postema & Jean Kotze

The two Stefanutti Stocks projects at the Cape Town International Airport will be fully operational for the 2010 Football World Cup in June.

### The new integrated international/ domestic terminal

Completion and handover of the domestic arrivals section of the project and an additional portion of the domestic departures took place on 21st April 2010. The international arrivals area was completed at the beginning of April and ACSA is now able to fully utilise this new world-class facility.

### Multi-storey car park

The Multi Storey Parking (MSP2) project achieved Practical Completion of all five floors at the end of January 2010. Minor works are due for the final completion in early May. MSP2 is an imposing, high quality off-shutter concrete structure. There is no external glazing, screens or painted plasterwork, only concrete, external louvers and sectional painted concrete walls.

“ACSA is very pleased with the functionality and aesthetics of their new facilities,” says Pieter Postema of the Stefanutti Stocks Major Projects division. “Both these projects stand testimony to what can be achieved through a combination of team spirit, hard work and a lot of enthusiasm.”

*(For more information on this project please refer to Benchmark Issue 1, May 2009, page 5).*



# @Stefanu

Your future is only as  
Multi-disciplinary engineering

## Structures

- Heavy industrial structures • Power projects
- Mining Infrastructure • Ports & harbours
- Bridges • Water & waste water treatment
- Piling & lateral support • Concrete rehabilitation

## Building Construction

- Healthcare facilities • Transport nodes
- Retail & parkades • High rise residential
- Housing • Office accommodation
- Educational institutions • Sports Stadiums
- Hotel & leisure

## Roads & Earthworks

- Landfill • Industrial terraces • Transport
- Residential & non-residential real estate
- Mining infrastructure • Petrochemical
- Asphalt & surfacing • Golf courses
- Rail • Freeways

## Mechanical

- Power transmis
- Cabling • Steel
- Structural steel



# Stefanutti Stocks

As good as we build it.

Engineering and construction group



United in bridging your expectations

## Electrical & Power

- Transmission & distribution
- Piping
- Tanks
- Kiln & mill installation
- Industrial electrical

## Mining Services

- Design & construction of waste/residue disposal and recovery facilities
- Operations & management of waste/residue disposal and recover facilities
- Open pit mining and materials handling facilities

## Concessions

- Public Private Partnerships (Infrastructure)
- Facilities management
- Concessions
- Property development facilitation

## Middle East

- General construction
- Electromechanical
- Interior fit-outs & refurbishment



### Stefanutti Stocks Holdings Limited

Kempton Park, South Africa

E-mail: [holdings@stefstocks.com](mailto:holdings@stefstocks.com)

Website: [www.stefanuttistocks.com](http://www.stefanuttistocks.com)

Tel: +27 11 571 4300

Fax: +27 11 571 4370



What a difference 12 months makes...

January 2009.

## Open for retail therapy I'Langa Mall!

Source: Kevin Paton

To construct a shopping centre covering a total area of 105 000m<sup>2</sup>, with 129 tenants, 47 000m<sup>2</sup> of retail area and 58 000m<sup>2</sup> parking... in a mere 14 months, is no mean feat!

The Stefanutti Stocks, Vlaming, Norse Joint Venture took possession of the site on 21st January 2009, with the opening date of the I'Langa Mall scheduled for 29th April 2010.

Despite delays totalling 34 working days and severe flooding of the centre, just over a year after project commencement, in January 2010, the first shops were handed over to tenants Edgars and Milady's for beneficial occupation. Game, Foschini, Truworths, Woolworths, Mr Price Home and Pick 'n Pay followed soon afterwards. Of the 47 000m<sup>2</sup> of rentable area, these eight retailers take up 23 000m<sup>2</sup>.

In mid March, another 46 shops were handed over for Beneficial Occupation so that the tenants could commence with their internal fit outs.

Impressive quantities of materials have been consumed. In excess of 34 800m<sup>3</sup> of concrete has been cast, 48 000m<sup>2</sup> of coffered slab formwork, 33 400m<sup>2</sup> of flat slabs formwork and over 2 000 columns were erected. Over 4 500 000 bricks were used and 51 580m<sup>2</sup> (seven rugby fields) of plaster completed.

The milestones achieved during this three way joint venture project were as a result of the commitment and willingness of the teams to work together and successfully deliver on this fast track programme. "There is no doubt that the I'Langa Mall will occupy a place of pride in the profiles of each of the companies involved," says Kevin Paton, contracts director.

The Stefanutti Stocks Geotechnical division undertook the piling at I'Langa Mall. "The geotechnical conditions of the site varied significantly, which meant each pile position was designed and assessed on an ad hoc basis" said Petrus van Straten, technical director for the division. "The soil conditions and varying water table on the site resulted in just over three kilometres of piling, or a total of 707 piles. The structures are founded on temporary cased straight shafted, temporary cased auger cast in situ piles, carrying their loads in a combination of side shear and end bearing."

## The Shoprite-Checkers Team

Pictured from left to right. Front row: Paul Serake, Thomani Ramanyimi, Fiona Nonyane, Abdullah Basradien. Middle row: Paul Ribeiro, Hub Spronck, Carlos Walane, Ivo da Costa, Patrick Chisunga, Joseph Manikie, Gcobani Tyobeka. Back row: Nicolas Claeys, Johan van Zyl, Hans de Raedt, Leon van Aardt.



## Dubai shopping style at the new **Bloomingdales**

Source: Steven Little

In February 2010 the landmark American department store, Bloomingdales, opened its doors to the Dubai public. The store, the first outside of the USA, was brought to the UAE by the Al Tayer Group.

The three-storey 15 000m<sup>2</sup> Department store and one-storey 5 000m<sup>2</sup> Home store are the anchor tenants at the Dubai Mall, Dubai's largest shopping mall.

Al-Tayer Stocks, part of the Stefanutti Stocks Group in the Middle East, were the main contractor for the R300 million interior fit-out for the luxury retail icon.

The Al-Tayer Stocks team worked around the clock, with project manager Ian Milford leading the day team and James Devadason project manager for the night shifts. Both were supported by contracts managers Najoa Hishmeh (main store) and Thufail Ahmed (Home store).

The mechanical, electrical and plumbing on both stores was carried out by the

Stefanutti Stocks' electromechanical operation Zener Steward.

The MEP team (pictured below) for the department store, led by Zener Steward project manager Robin Godwin, delivered an MEP package to the value of R60 million within the six month period. The MEP team for the homestore, led by Zener Steward project manager

Renny Kurikose delivered an MEP package to the value of R23 million within five months.

This multi-million prestigious fit-out project, which was constructed to very tight deadlines in a live mall, was completed on time and to the client's satisfaction.





## Stefanutti Stocks provides lateral support at Sandton City

Source: Marius van der Merwe

Work on site for Phase 1, of the Sandton City Repositioning project, started in January 2009 and the project is due for completion in November 2011.

The excavation of the basement, undertaken by Zero Unlimited Earthworks, required lateral support around the perimeter. The contract for the lateral support was awarded to the Stefanutti Stocks Geotechnical division in May 2009 on a design and construct basis.

“Our scope of work on this project consisted of lateral support and piling,” says William du Toit from Stefanutti Stocks. The lateral support and piling increased considerably in value during the project, and this part of the project was completed at the end of April 2010. “During the duration of the project a total of 165 000m<sup>3</sup> of material was excavated,” says Marius van der Merwe, “110 000m<sup>3</sup> of which was rock.”

While designing the lateral support, our geotechnical engineer, Ken Schwartz, was faced with a number of challenges.

- The existing building was situated approximately 500mm away from the north and west walls of the excavations. Some of the old building’s foundations were piled and some pad footings. The foundations on pad footings required additional active support.
- The excavation depth next to the existing buildings was up to 8.5m. To accommodate this a combination of soil nails, gunite with mesh reinforcing, temporary anchors and whalers were used. Poly fibres were used as reinforcing over the exposed rock faces.
- The south walls next to the boundary prevented the use of permanent

anchors or soil nails and the piles had to be designed to carry their load into the new building in the final state.

- The rock level varied substantially, from 5.7m below to 7.6m above the final excavation level. This necessitated the installation of 900mm diameter piles to rock level with anchor dowels at the toe. In very shallow rock conditions the dowels were not sufficient and 380mm diameter mini-piles had to be installed through the 900mm diameter piles to the required depth below excavation level.
- A perched water table on the south wall caused collapse during pile driving and resulted in Stefanutti Stocks using 1 050mm diameter temporary casings to facilitate installation.

### Quantities:

#### Lateral support

- 3 460m<sup>2</sup> temporary gunite walls with temporary soil nails, anchors

and whalers.

- Piled walls with gunite arches, temporary anchors and permanent dowels at the bottom. 1 385m linear meters of piles installed over an exposed area of approximately 3 405m<sup>2</sup>.
- 210m<sup>2</sup> permanent gunite walls with permanent soil nails.
- A 7 075m<sup>2</sup> area of lateral support.

#### Piling

- Tension piles;
- 1 400 kN 300mm diameter post stress piles;
- 1 400 kN 300mm diameter reinforced tension piles ;
- Mini piles;
- 150mm diameter piles; and
- 300mm diameter piles.

This busy construction site employed 113 people and some impressive machinery including Casagrande B170 and B125 piling rigs, a C8 and two C6 Casagrande crawler rigs, three Comacchio crawler rigs and two Furukawa crawler rigs.



# Specialized underground 4x4 diesel vehicles

Source: Shaun Alcock

The Stefanutti Stocks Mechanical, Electrical & Power Business Unit undertakes both surface and underground construction work for platinum, gold and coal mining clients.

Our comprehensive range of equipment ensures that we can tackle any construction project even in the most remote locations. Included in our fleet are 4x4 diesel vehicles that have been specifically adapted for use in the incline mining operations for the transportation of personnel and equipment. "Our vehicles don't just go over any surface," says Shaun Alcock, "they can operate under it too!"

This underground, motorised transport has both safety and efficiency benefits. Its

introduction has improved the efficiency of our resources on site, also eliminating the risk of injury in walking down and up the incline shaft, which will often occur numerous times a day.

The main safety features of these vehicles include:

- a) A unique exhaust system that operates at lower than normal temperatures.
- b) A sealed integrated brake system, including the feature that the brakes lock automatically when the vehicle engine is not running.
- c) A fire suppression system which, in the event of fire, is activated by pressing a switch which then sets off the fire extinguishers that are piped around the engine compartment flooding it with foam.

The drivers of these vehicles participate in a detailed training program that familiarises them with the traffic rules and the relevant safety aspects of operating the vehicle underground. In addition a psychologist assesses them to establish that they are capable of dealing with the potential stress associated with operating the vehicle.

"The introduction of these underground vehicles for transportation has hugely benefitted our underground operations," says Shaun Alcock.



Pictured above: The 4x4 vehicle has both safety and efficiency benefits.

Pictured below: The fire extinguishers are piped around the engine compartment.



# More power at Majuba Majuba 400 kV Loop-in project

Source: Roger Venzo

The newly established Stefanutti Stocks Power Division successfully secured the award of its first major project. ESKOM required considerable restructuring of the existing electricity grid to ensure security of supply during the 2010 Football World Cup. In some instances the supply of power was diverted onto new lines.

The restructuring of the existing grid included the tie-in of 400 kV and 765 kV power lines at the Majuba Power Station near Volksrust. This also entailed the installation of foundations, erection and stringing of two 400 kV lines and one

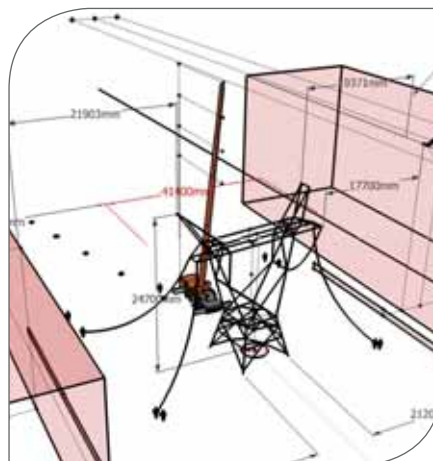
765 kV line, as well as the dismantling of portion of the existing Majuba-Venus 400 kV line.

The 765 kV terminal tower foundation is made up of 180m<sup>3</sup> of concrete and weighs 78 ton. The lift of this tower was done in three sections, using a 150 ton crane.

"Work progressed continuously since the beginning of February in order to

meet the three shutdown dates that were programmed over three week-ends in April," says Roger Venzo, from Stefanutti Stocks. "Despite time lost due to rain which resulted in lack of access with heavy plant, the program ran on time. A feat which is due to the commitment of our team."

The project was successfully completed at the end of April.



A diagram of Tower 11, final stage.



The erection of the 400 kV tower on the Majuba turn in, using a 90 ton crane.

Multi-disciplinary

# Kusile Power Station



## Project overview

The main civil works for Eskom's new Kusile Power Station in Mpumalanga commenced in January 2009. The Kusile Civil Works Joint Venture is led by Stefanutti Stocks and includes Group Five, Basil Read and WBHO.

"Four of South Africa's main construction companies in joint venture, international project managers and comprehensive environmental, safety and quality requirements, means we're leading a major project and operating in a very sophisticated environment," says project director Mark Stannard from Stefanutti Stocks. "Over a year into this major contract, we have welded together as a team and under the leadership of project manager, Fanie van Wyngaard are ready for any challenges that await us!"

Stefanutti Stocks Civils, Geotechnical and Earthworks divisions are involved in the project. The completion of the main civil works on the power block (consisting of six generators) will see an impressive number of quantities realized – including 4 000 piles totaling around 61kms, 400 000 cubes of concrete, 45 000 rebar, and 610 000 cubes of bulk earthwork.

A labour force, totaling 1 900, close to 50% of whom are local residents, will be employed during this four and a half year project. A training centre has been established at Wilge, close to the Kusile site, where training including scaffolding, slip-forming, concreting, safety and working at heights takes place.



## Geotechnical @ Kusile

Source: Don Layfield

The contract to install some 61km of piling was awarded to the Stefanutti Stocks-Franki Africa joint venture (SSF JV). The 4 160 augered piles vary in diameter from 800mm to 1200mm.

SSF-JV started at the Kusile site in Mpumalanga in January 2009 and the first pile was installed in mid March when access and drawings became available.

The geological interpretation on the site plan shows three different rock formations on the 600m long footprint of the power station:

1. Diabase with large core stones present in the weathered zones.
2. Rayton Shale formation.
3. Tillite & Shale, Dwyka Group (overlies Rayton Shale at depth).

The shale formation is lying at an angle of 60 degrees falling towards the Diabase, and severe water seepage is common in the contact zone.

"In the contact zone we have variable conditions with side wall collapses and a lot of water to contend with," says Don Layfield, of Stefanutti Stocks. "Some of the piles are 25m deep, and a mere few metres away, only 12m deep."

When there is water in the pile, a tremmie pipe is used to through which the concrete is pumped. As the concrete is pumped in, the water is forced to the surface and good concrete is left behind.

Due to the stringent settlement requirements and the obvious dangers associated with differential settlement on power stations, the preferred method of load transfer is end bearing and the quality control procedures to ensure load transfer is comprehensive.

Specially trained employees are lowered into the dry holes to clean up the loose material thereby ensuring 100% contact.

To facilitate safe cleaning we installed a temporary steel casing to within 1m of the hole bottom to protect the cleaner. The cleaners further participated in a training program about working in confined space. Training includes testing for claustrophobia, safety measures that need to be in place before their descent and training in how to react should a crisis occur when they are underground. Each cleaner has a secondary winch attached to his harness should there be a problem with the crane. Before entering the hole the air is tested for dangerous gases and each cleaner carries a gas monitor with an audio alarm should the underground gas levels rise while he is working.

In Unit 6, where the sixth generator will be built, a high level of carbon monoxide in the trial holes made it impossible to clean the bottom of the pile by hand. The "base grouting" method is used here, which entails fixing four pipes into the pile while it is being installed. The bottom of the pile will be flushed with high-pressure water and once only clean water comes back through the pipes, grout will be pumped down to the bottom of the pile to fill the cavity formed by the water.

"The benefit of working in joint venture is that we are able to draw resources from two of the major players in the piling game," says Don. We have a total of eight piling teams; six are working in various sections moving around as the priorities from the main contractor dictate.

A seventh team is carrying out lateral support, tension anchors and the ongoing tests required by the client and designer. The eighth team is still carrying on with ground investigations.

Weather patterns have changed drastically in the last few years and with the increased rainfall, working conditions have at times been difficult. "By mid March we had completed 2 250 piles," says Don. "The work we are currently undertaking will be completed by the end of July. There is a strong possibility we will pile the Turbine and Air Cooled Conditioners in Unit 6, with another 1 000 piles, which would extend our stay until the end of the year."

## Slipforming @ Kusile Auxiliary Bay Lifts Shafts & Shear Walls

Source: Paul Botha

Commencing in April 2010, the Stefanutti Stocks Civils division will be sliding twelve Auxiliary Bay lifts and twelve Auxiliary Bay shear walls at Kusile power station.

These structures are as follows:

### Type 1 Lift & Stair Shaft

- Shape - Rectangular
- Wall thickness - 350mm
- Wall height - 28 681m
- Dividing walls - Yes

### Type 2 Stair Shaft

- Shape - Rectangular
- Wall thickness - 350mm
- Wall height - 20 600m
- Dividing walls - None

The challenge on this project will be to slide the type 1 structure to level 27 551 and then split the sliding platform into two sections leaving the stair shaft section behind. Then the team will complete sliding the 1 130 lift shaft section to level 28 681. "This is certainly not unfamiliar territory to our team," says Paul Botha, slipforming site agent. "We have dealt with these types of scenarios in the past, most recently at Ngezi Platinum Mine Expansion Project in Zimbabwe."

The team will need to slide the shear walls, which will act as a stabiliser for the steel structure located in the Auxiliary Bay, including access doors that will be slid into the Shear Wall structure, serving as access between the Boiler House and the Auxiliary Bay. The shear walls will consist of the main concrete structure and various cast-in plates at different intervals.

The contract duration is 18 months in which the slipforming teams need to complete a total of 24 slides.

## Earthworks @ Kusile

Source: Kurt Behm

Stefanutti Stocks is the main contractor for the bulk and restricted excavation and also undertakes the blasting for the JV. They started on site in February 2009. Included in their scope of works is the back filling, paving and access roads in the power block.

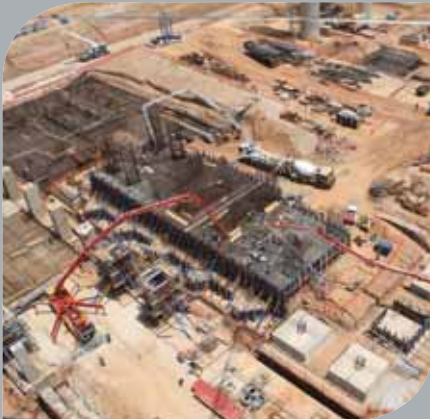
"The busy work environment, the proximity of the work areas and people to each other, as well as the depths of the excavations require precision and attention to detail and procedures," says Kurt Behm from the Stefanutti Stocks Earthworks division.

### Environmental

"The wetlands on either side of the power station are very sensitive areas," continues Kurt. "We are installing gabions in the storm water trenches, specifically to prevent contamination of the water systems and the Wilge river."

Within the yard alien vegetation is being removed and erosion control measures include sodding the banks of the platforms and putting stonewalls in the drains to slow the flow of the water.

Further environmental work is in the catchment area for all the storm water on the western side of the site. This involves a very large earth dam with an overflow system to trap silt. In a bid to counteract the erosion, energy dissipation structures (rock pitching with grouting) are being installed where the drains meet and the outflows are. This will break the force of the water, slowing it down and stabilizing the ground.



*To date over 1 million D.I. free man-hours have been achieved.*



Making sure the evil stays buried for good.

## Capping an Environmental Evil

Source: Leon van der Merwe



Asbestos pollution, as is widely known, is dangerous to humans. Eskom is in the process of aggressively addressing environmental issues such as these on all their plants across South Africa.

Originally, when cooling towers were built the only option to distribute the hot water into the tower was through asbestos cement pipes containing small amounts of asbestos fibre. These have now been replaced with PVC pipes.

Each of the six cooling towers at the Camden Power Station yielded almost 40 ton of material containing some asbestos, leaving a lot of material to dispose of.

In line with the drive to rehabilitate existing asbestos dumps around the country, the Department of Environmental Affairs and Tourism has issued specific permit conditions for the rehabilitation of

these dumps. Stefanutti Stocks recently rehabilitated the asbestos dump at Camden, in line with this permit.

The dump covered an area of 12 600m<sup>2</sup> and was located adjacent to the ash dump. "Our first task was to clear all the vegetation on the dump," said site agent Leronti Letoao. "We then imported about 4 000m<sup>3</sup> of ash to level the area."

Four 30-ton cement spreader trucks were then used to place 120 ton of cement on a daily basis for the stabilisation. Over 1 000 ton of cement was used for the entire project. We constructed a 500mm thick cement stabilised ashcrete layer (consisting of two layers of 250mm each), thus creating an impervious capping to the buried asbestos.

The last step was adding 100mm of topsoil over the capping layer in preparation for natural vegetation to take root.



## Rock Cladding of Tailings Dam

Source: Mike Smith

Environmental awareness and compliance is a major consideration for many mining clients whose tailings dams are nearing the end of their lifespan. Erosion control measures are being built into the design of tailings facilities, with options including vegetation, geomembrane /soil covers and various rock cladding options, if rock is available in the vicinity of the mine.

Rock cladding has proven to be a successful environmental erosion control method and has yielded good results in numerous large-scale projects undertaken by Stefanutti Stocks Mining Services.

This method sees the cladding applied to the side slopes during the operational life and top surfaces of a tailings dam (at the end of the life of the facility) to provide long-term wind and water (rainfall) erosion control. Rock clad side slopes have achieved a 100% elimination of wind erosion and 90% reduction of water erosion when compared with untreated side slopes.



Typical erosion to untreated side slope of a tailings dam.

"Based on research and our experience working on these projects," says Mike Smith, head of the Mining Services business unit, "there are a few guidelines that are crucial for the rock cladding method to be successful."

A detailed engineering design of each unique facility is completed by Stefanutti Stocks, prior to the execution of these works. Once the design is

A completed side slope.



completed site quality control becomes of utmost importance. This includes rigorous quality control and site supervision measures to ensure beyond any doubt that all aspects of the design and specifications are adhered to.

The feature that produces the most problems is the bench drainage system and we always recommend to our clients that existing bench drainage be removed and replaced with properly designed new decant measures. Upgrading existing drainage features often results in inefficiencies.

The visual impact of rock cladding can be reduced with the installation of vegetation pockets and or a mixture of suitable growing medium with the rock, in an attempt to secure seed generation and vegetation establishment on the rock clad surface. This also makes it a more acceptable long-term closure methodology.

Stefanutti Stocks have completed four large-scale projects of this kind:

- ± 12 ha at the Lindum Reef tailings dam;
- ± 50 ha at the Cooke Plant tailings dam;
- ± 50 ha at the South Deep tailings dam, and
- ± 40 ha at the Luipaardsvlei tailings dam.



Preparation of the slope with a modified excavator bucket.



Typical fine rock dump.



View of completed dam portion.



The onset of vegetation.



# Roads & Earthworks South Africa achieves 1 000 000 D.I. free hours

Source: Francisco Santos

Achieving 1 000 000 Disabling Injury free hours in construction is a significant accomplishment and a goal set by most players in our industry. On 24th February 2010, through the commitment and efforts of each and every one of our workers at all our sites across South Africa, we achieved this major milestone.

“Our attitude towards safety, health and environment goes beyond legal requirements and best practice principals. This very significant achievement reinforces our commitment to ZERO disabling injuries,” says Francisco Santos, HSE manager of Stefanutti Stocks Roads and Earthworks.

We continually improve our SHEQ System by ensuring our employees are always fully aware of their responsibilities with

regards to Safety, Health and the Environment. The long term benefit of embracing a Safety Culture in our lives will benefit our organization, our families and our existing and future clients.



The Roads & Earthworks Business Unit SHEQ Management at the Kusile site on an internal audit inspection. From left to right: Pieter van der Berg (BU SHEQ manager), Francisco Santos (HSE manager) and Trevor Pomeroy (Quality manager).

## Your Safety First

Source: Mike Stevenson

Stefanutti Stocks Civils is currently on site at the Thubelisha colliery in Mpumalanga. The division is working on the civil contract (for client Sandvik) to supply conveyors and a coal handling surge facility for Sasol.

“Sasol has some of the most stringent safety guidelines in the industry,” says Mike Stevenson, contracts director. “For this project we partnered with Sandvik to introduce a fresh safety campaign which targets the key concerns of site safety, in a way that invites our employees to engage with these areas.”

The Your Safety First campaign includes:

1. The message - Your Safety First. Think Safe. Work Safe. Be Safe. Too much to lose.
2. Two safety mentors - Madala (the wiser, older character) and Bafana (young and eager, willing to learn) who are portrayed in different scenarios on posters across the site.
3. A link to the 2010 World Cup football via a “flying ball” (pictured on the front page) and branded give-aways.



Two of the many teams across the country who have contributed to this achievement.



“We are talking about more than just the rules here, which compliance with remains non-negotiable. Our safety campaign carries the message that our people matter, and their safety counts,” comments Mike. “We aim to instill a sense of self preservation in our workforce and an understanding of our safety requirements, rather than just demanding blind compliance with the rules.”

# Safety a priority at Richards Bay Minerals Tailings Plant

Source: Wade Leaf



On a daily basis the site team at the RBM Tailings Plant is challenged, from a procedural and safety and quality point of view. "Our team is working under immense pressure," says Wade Leaf, contracts director for Stefanutti Stocks Civils KZN. "We are striving to produce work of the highest quality, and the team is making considerable headway, considering that production efficiencies in this stringent environment are noticeably lower than in our traditional work areas."

The project is currently reporting 414 098 LTI free hours and we aim to reach 500 000 LTI free hours within the next two months. The contract is on schedule to finish in July 2010.



## Superb Safety at Sishen South

Source: Ferdie Potgieter

The Stefanutti Stocks Civils team (179 employees at the project's peak) working on the Sishen South Project in Postmasburg has achieved 193 605 LTI free man hours to date. Since the start of the project in mid June 2009 a LTIFR of zero was maintained. Our target is to complete this project without any lost time injury.

At the 2009 Kumba Iron Ore year-end function, we were awarded two certificates. One for maintaining the best lay down area on site at the 1MI process water reservoir and one for maintaining a high level of safety standards based on Sishen South Project SHE targets of Zero Harm, Zero Repeats, Zero Tolerance and Non Negotiable Standards. "I would like to take this opportunity to thank the project team for their efforts and commitment over the last few months," says Ferdie Potgieter,



senior safety officer on the site. "Without their dedication and hard work, milestones like these will not be reached. A special thanks to the management team for their support and commitment in striving to achieve and maintain Zero Harm."

Kumba Iron Ore had set very high document control standards with the implementation of a share point management system. They have also expressed that this project is to become a benchmark for their future projects.



## Stefanutti Stocks - developing people to their **fullest potential**

Source: Eben Britz

### Site Leadership Development Programme - Each one teach one

2009 saw the launch of Stefanutti Stocks Civils Gauteng Site Leadership Development Programme. A structured in house curriculum aimed at participants from project managers to engineers and quantity surveyors throughout the Civils Business Unit.

The leadership programme is based on a philosophy of knowledge sharing within the company, Quisque Docui Unus = each one teach one.

The purpose of the programme is not only to form a core part of the participants career development in the organisation but it also empowers all potential candidates in Stefanutti Stocks to acquire a higher level of knowledge and skills to cope with technical, social and economic demands.

The programme has 58 participants and the fourth module commenced at the beginning of April 2010.



Bursary

## Programme

Source: Eben Britz



Stefanutti Stocks offers a full bursary scheme to all students studying within the civil engineering and construction fields. Bursaries are awarded to students studying towards a degree in Civil Engineering, Construction Management and Quantity Surveying for both universities and universities of technology.

In 2009 14 students qualified; of which 8 studied civil engineering, 3 quantity surveying, 2 construction management and 1 building science.

“At present Stefanutti Stocks Civils Gauteng has 24 active bursary students who are studying at various universities and universities of technology around South Africa.” says Eben Britz, training manager for Stefanutti Stocks Civils. “We take great pride in our students as they are the future of this company.”

For further information on this development programme, please contact Eben Britz at 011 571 4300.

## Sinathemba Hope House

Stefanutti Stocks’ relationship with Sinathemba began when Gino Stefanutti first pledged support to the non-profit organisation four years ago by building an extension to the existing house. Since then the Group has continued to support via ad hoc financial contributions.

Sharon and Grant Mc Cill founded the non-profit organisation ten years ago, when they first opened their home to children from various backgrounds who found themselves without an essential support system due to a variety of circumstances. The couple opened their home to give children and young people an opportunity to grow up in a ‘normal’ family environment. The strong work ethic encourages all members of the family to progress beyond orphan mentality. The children are encouraged to be independent and the philosophy

at Sinathemba has always been to ask for a ‘fishing boat’ instead of ‘fish’.

“it has been a major achievement to maintain up to 26 children, clothe, feed, educate, heal them and teach them how to live as part of a family,” says Grant. “This will equip them for future integration into society and in establishing their own successful family units.”

Please contact Grant or Sharon at 011 963 0382 or 087 8077 143 for more information on their amazing success stories or if you’d like to support in any way.



The extension to the house, consisting of 2 bedrooms and 2 bathrooms.



The smiling Sinathemba Hope House family.

## Collingwood Primary update

The official hand-over of the new tuck shop at Collingwood Primary School took place recently when John Jackson, MD Stefanutti Stocks Civils KZN, unveiled the Stefanutti Stocks plaque and presented Mr Chand, Principal of Collingwood Primary, with the fully operational tuck shop.

The hand-over reinforces Stefanutti Stocks Civils KZN's commitment to community upliftment through its various initiatives within surrounding communities.



John Jackson hands over tuck shop to Mr Chand.

## Iron sheets for Sikhuphe storm victims

The Stefanutti Stocks Swaziland operation recently donated 500 corrugated iron sheets to the community surrounding the new Sikhuphe airport site. The contribution is a bid to assist victims of the recent hurricane that swept through the region, leaving many residents homeless.

Shaun White, contracts manager, donated the building material to the community on behalf of the company. "We saw the intensity of the storm and as members of the community need to play our part in lending a helping hand to the victims."

Deputy Prime Minister of Swaziland, Thema Masuka accepted the gift for the community. "This is a commendable move by the company as it's always a blessing to give back. We are very grateful indeed," said DPM Masuka.

## Hair or hairless.. the annual CANSA Shavathon

This year 194 shopping venues and 280 work places participated in the annual CANSA Shavathon – including the Stefanutti Stocks Civils and the Stefanutti Stocks Building Cape Town divisions.

Short back and sides, spraying, stenciling.... Some brave ladies even agreed to shave their locks off entirely!

"Great camaraderie and laughter was the rule of the day," said Stefan Strauss, Stefanutti Stocks Civils HR manager. "The event was a fun event for a cause that is very close to our hearts. We raised close to R8 000 for the Cancer Association of South Africa."

In the fair Cape the Shavathon is entrenched as an annual event at the Stefanutti Stocks Building offices. "The event has become such an institution at our offices that not only staff but our contractors and subcontractors also participate," says Chris von Ess. "A big thank you to everyone who sacrificed a little hair for this very big cause. We managed to raise a grand total of R25 000."



Cape Town



Gauteng



Gauteng



Gauteng

## Flying the Stefanutti Stocks flag in Mozambique

The Stefanutti Stocks team working at the Sasol site in Mozambique have

spread a little bit of the World Cup spirit across the South African border by donating a football pitch and football kit to the Chisotso community.

The team pictured below is made up of Stefanutti Stocks employees and youths from the community. Games are held every Sunday against neighbouring villages and on 18th April 2010, the Stefanutti Stocks team drew 2-2 with the team from Mangaumede village.



# Progress Snapshots

## Looking impressive from the sky!

The Khangela Bridge (1) and the King Shaka International Airport Interchange Bridges (2) in KZN are both nearing completion.



The new KZN head office for Liberty Properties, adjacent to the new Garden Court Hotel currently under construction for Southern Sun.



## A royal stadium

Princess Magogo Stadium completed by Stefanutti Stocks Building KZN looking impressive and ready for kick off.



## Another phase of Freedom

Source: Danie Moolman

A further phase of this landmark project has been awarded to the Gauteng division of Stefanutti Stocks Building. Phase 2B will be the new home for the administrative and support personnel of Freedom Park. This 3 500m<sup>2</sup> office building consists of four levels with face-brick facades and a copper clad roof to link up with the impressive copper facades of the now completed Phase 2A (pictured on the right). The lateral support

sub-contract was awarded to the Stefanutti Stocks Geotechnical division.

Planned practical completion of this project is end September 2010.



## Stefanutti Stocks cricket day

Following the success of the first social cricket game between company divisions Stefanutti Stocks Civils KZN and Stefanutti Stocks Building KZN in March, another fun filled cricket day was hosted where Stefanutti Stocks Civils KZN challenged Bosch Projects.

